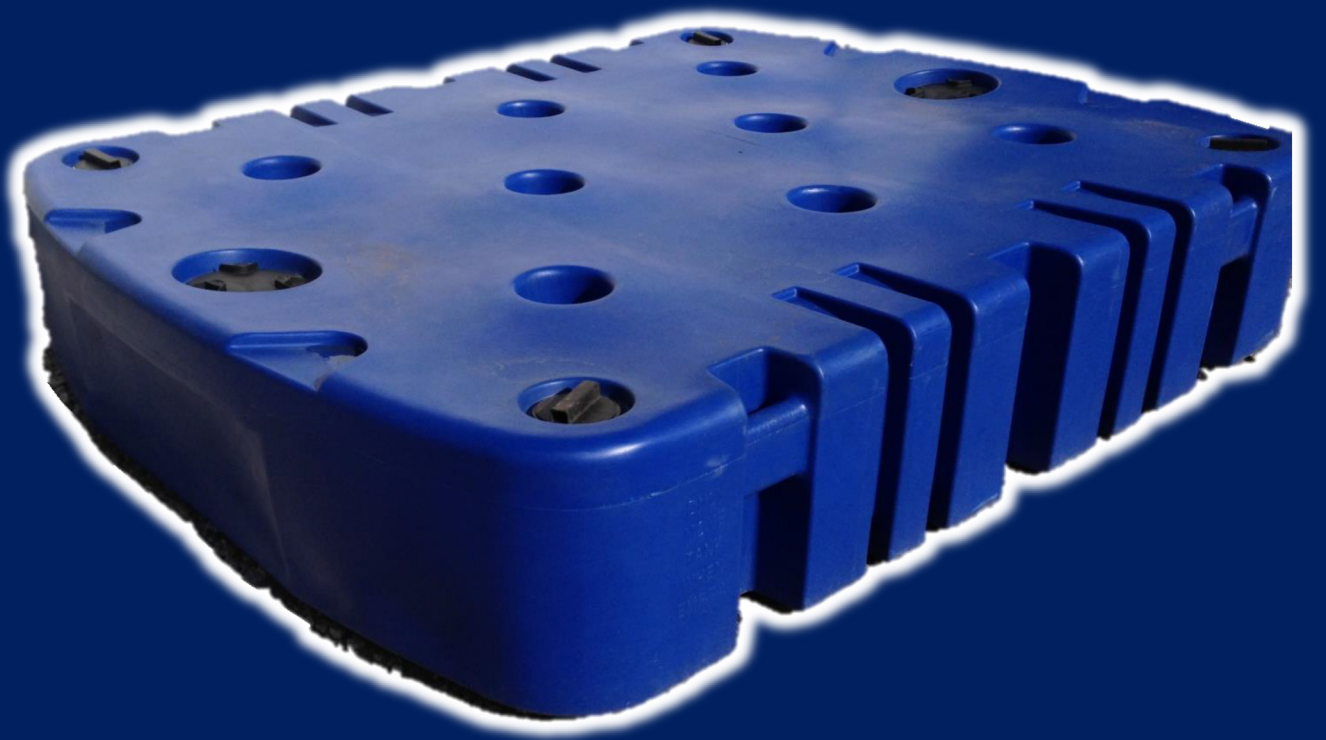


PLASTIC EFFLUENT TANK



universal
Tanker Group Ltd

LOW PROFILE TANK

USES

- Low profile, under cabin, effluent tank

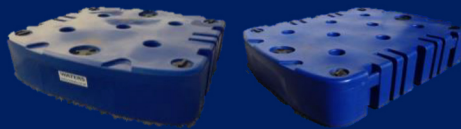
FEATURES

- Does not rust or corrode
- Integrated handles/lifting points
- Flats for connection of liquid level monitoring device
- Flats for connection of extended vent pipe
- Lighter than steel tanks
- Strengthened by moulded through columns
- 8" emptying hatch at both ends
- 4" access point in each corner
- Two capacities – 500 and 700 gallon
- Permanent, moulded in, safe handling advice

INSTALLATION INSTRUCTIONS

- Tank should be located on a flat, level surface
- Tank must only be handled when empty

TECHINCAL INFORMATION



DIMENSION	500 Gallon	700 Gallon
LENGTH (mm)	2235	3100
WIDTH (mm)	2400	2400
HEIGHT (mm)	550	550
MASS (kg)	110	170



8" Lid



4" Lid



Lifting Handle



Safe Handling Instructions



Moulded through Column



Flats for Connections



2000 LT WATER BOWSER



universal
Tanker Group Ltd

2000 LT BOWSER & ON DEMAND PUMP

INSTALLATION INSTRUCTIONS

- Bowser should be located on a flat, level surface
- Bowser must only be handled when empty
- **PLEASE NOTE** – Bowser must be drained of water before collection to avoid waiting time charges

ON DEMAND WATER PUMP INFORMATION

Universals' on demand boostomatic pump provides a constant water supply to cabins, toilet blocks and other site facilities.

- 1P44 16amp plug
- 240v pump
- 15mm push fitting

TECHINCAL INFORMATION



	2000 LT BOWSER	ON DEMAND PUMP
DIMENSION		
LENGTH (mm)	1820 (5'11")	485
WIDTH (mm)	1240 (4' 1")	280
HEIGHT (mm)	1340 (4' 4")	430
MASS (kg)	65 (empty)	-

SAFETY INSTRUCTIONS

DAILY CHECKS

The operator should carry out the following daily checks before operating this equipment;

- The bowser has sufficient water in it.
- That all connections/fittings are sound.
- In frosty weather that the water is not frozen (*see sub-zero temperatures advice*)

OPERATION

- All electrical connections should be made by a competent person.
- Do not place bowzers on top of Toilet units or Accommodation units – although they are light when empty, they weigh in excess of 2T when full.

SUB ZERO TEMPERATURE ACTION

ON DEMAND WATER PUMPS

- Please be aware that these units are not designed to work in sub-zero temperatures or frost conditions.
- When the temperature drops below 10C please stop using the on demand pump, turn off the water supply, disconnect the pump and place in a warm environment.

Failure to remove the on demand pump in sub-zero temperatures will result in replacement costs and downtime. The cost of an on demand water pump is circa £460.00 NETT